

Think Biosecurity!

at farm gate ✓✓✓



Stop

Minimise entry of vehicles, supplies, equipment to your farm, and limit vehicle access to your flock.



Restrict

Restrict entry to essential personnel, login people and vehicles.



Disinfect

Disinfect vehicles and equipment.



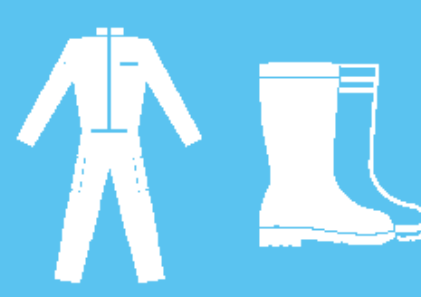
Sanitise

All personnel must use footbath at entry.



Minimise

Minimise visits to other poultry farms. If visiting other farms / barns, shower before entering the site.



Change

Poultry farmers and visitors should change into dedicated/ disposable clean boots and coveralls upon entering the site.



Wash

Wash hands and use hand sanitiser before and after handling the birds.



Clean up

Clean up any spilt feed and report standing water to your site manager.



Avoid

Avoid contact with outside birds.



Pests

Maintain and monitor a pest control programme of wild birds rodents and insects.



Monitor

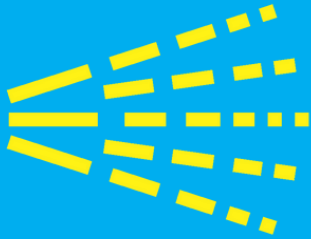
Regularly monitor flock health and immediately report any behaviour differences or suspicion of disease to your manager or veterinarian.



Review

Read and review your Practical Biosecurity Checklist.

Think **Biosecurity!** at farm gate



- Disinfect vehicle wheels



- Every vehicle and all equipment must be logged in

- Everyone must sign in



- Dedicated farm footwear and clothing only

Think Biosecurity!

at hen house ✓✓✓



Restrict

Restrict entry to essential personnel.



Change

Poultry farmers and visitors to each shed/barn should change into dedicated/disposable clean boots and coveralls upon entering.



Sanitise

All personnel must use footbath at entry.



Wash

Wash hands and use hand sanitiser before and after handling the birds.



Clean up

Clean up spilt feed and water. Remove dead birds immediately.



Prevent

Prevent access to outside wild birds.



Pests

Maintain and implement a pest control programme which includes wild birds, rodents and insects.



Monitor

Regularly monitor flock health and immediately report any suspicion of disease to your manager or veterinarian.



Review

Read and review your Practical Biosecurity Checklist.

Biosecurity Control Point on farm



Clean up
all spilt feed

Biosecurity Control Point on farm



**Sanitise – All
personnel must use
footbath at entry**

Biosecurity Control Point on farm

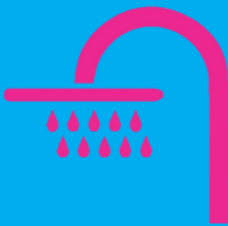


Rodent bait station

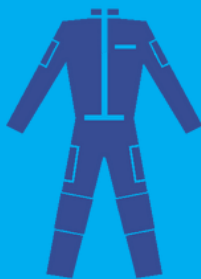
Think **Biosecurity!** at hen house



- Everyone must sign in



- No access without showering



- Dedicated poultry house clothing only